

GUIDANCE FOR CLEANING & DISINFECTING

PUBLIC SPACES, WORKPLACES, BUSINESSES, SCHOOLS, AND HOMES



SCAN HERE
FOR MORE
INFORMATION

1 DEVELOP YOUR PLAN

DETERMINE WHAT NEEDS TO BE CLEANED.

Areas unoccupied for 7 or more days need only routine cleaning. Maintain existing cleaning practices for outdoor areas.

DETERMINE HOW AREAS WILL BE DISINFECTED. Consider the type of surface and how often the surface is touched. Prioritize disinfecting frequently touched surfaces.

CONSIDER THE RESOURCES AND EQUIPMENT NEEDED. Keep in mind the availability of cleaning products and personal protective equipment (PPE) appropriate for cleaners and disinfectants.

Follow guidance from state, tribal, local, and territorial authorities.

2 IMPLEMENT

CLEAN VISIBLY DIRTY SURFACES WITH SOAP AND WATER prior to disinfection.

USE THE APPROPRIATE CLEANING OR DISINFECTANT PRODUCT. Use an EPA-approved disinfectant against COVID-19, and read the label to make sure it meets your needs.

ALWAYS FOLLOW THE DIRECTIONS ON THE LABEL. The label will include safety information and application instructions. Keep disinfectants out of the reach of children.

3 MAINTAIN AND REVISE

CONTINUE ROUTINE CLEANING AND DISINFECTION.

Continue or revise your plan based upon appropriate disinfectant and PPE availability. Dirty surfaces should be cleaned with soap and water prior to disinfection. Routinely disinfect frequently touched surfaces at least daily.

MAINTAIN SAFE PRACTICES such as frequent handwashing, using cloth face coverings, and staying home if you are sick.

CONTINUE PRACTICES THAT REDUCE THE POTENTIAL FOR EXPOSURE. Maintain social distancing, staying six feet away from others. Reduce sharing of common spaces and frequently touched objects.

For more information, please visit [CORONAVIRUS.GOV](https://www.cdc.gov/coronavirus)



MAKING YOUR PLAN TO CLEAN AND DISINFECT

Cleaning with soap and water removes germs, dirt, and impurities from surfaces. It lowers the risk of spreading infection.

Disinfecting kills germs on surfaces. By killing germs on a surface after cleaning, it can further lower the risk of spreading infection.



Is the area indoors?

YES

It is an indoor area.

NO

Maintain existing cleaning practices.

Coronaviruses naturally die in hours to days in typical indoor and outdoor environments. Viruses are killed more quickly by warmer temperatures and sunlight.

Has the area been occupied within the last 7 days?

YES

Yes, the area has been occupied within the last 7 days.

NO

The area has been unoccupied within the last 7 days.

The area will need only routine cleaning.



Is it a frequently touched surface or object?

YES

Yes, it is a frequently touched surface or object.

NO

Thoroughly clean these materials.

Consider setting a schedule for routine cleaning and disinfection, as appropriate.

What type of material is the surface or object?

Hard and non-porous materials like glass, metal, or plastic.

Visibly dirty surfaces should be cleaned prior to disinfection.

Consult EPA's list of disinfectants for use against COVID-19, specifically for use on hard, non-porous surfaces and for your specific application need. More frequent cleaning and disinfection is necessary to reduce exposure.

Soft and porous materials like carpet, rugs, or material in seating areas.

Thoroughly clean or launder materials.

Consider removing soft and porous materials in high traffic areas. Disinfect materials if appropriate products are available.



RESTAURANTS AND BARS DURING THE COVID-19 PANDEMIC



The purpose of this tool is to assist businesses in the food service industry, such as restaurants and bars, in making (re)opening decisions during the COVID-19 pandemic. It is important to check with state and local health officials and other partners to determine the most appropriate actions while adjusting to meet the unique needs and circumstances of the local community.

Should you consider opening?

- ✓ Will reopening be consistent with applicable state and local orders?
- ✓ Are you ready to protect employees at higher risk for severe illness?

ALL YES



Are recommended health and safety actions in place?

- ✓ Promote healthy hygiene practices such as hand washing and employees wearing a cloth face covering, as feasible
- ✓ Intensify cleaning, sanitization, disinfection, and ventilation
- ✓ Encourage social distancing and enhance spacing at establishments including by encouraging drive-through, delivery, curbside pick up, spacing of tables/stools, limiting party sizes and occupancy, avoiding self-serve stations, restricting employee shared spaces, rotating or staggering shifts, if feasible
- ✓ Train all employees on health and safety protocols

ALL YES



Is ongoing monitoring in place?

- ✓ Develop and implement procedures to check for signs and symptoms of employees daily upon arrival, as feasible
- ✓ Encourage anyone who is sick to stay home
- ✓ Plan for if an employee gets sick
- ✓ Regularly communicate and monitor developments with local authorities and employees
- ✓ Monitor employee absences and have flexible leave policies and practices
- ✓ Be ready to consult with the local health authorities if there are cases in the facility or an increase in cases in the local area

ALL YES



OPEN AND MONITOR

ANY NO



DO NOT OPEN

ANY NO



MEET SAFEGUARDS FIRST

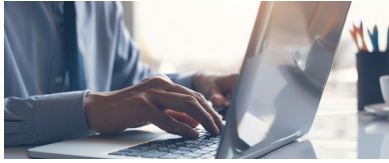
ANY NO



MEET SAFEGUARDS FIRST



WORKPLACES DURING THE COVID-19 PANDEMIC



The purpose of this tool is to assist employers in making (re)opening decisions during the COVID-19 pandemic, especially to protect vulnerable workers. It is important to check with state and local health officials and other partners to determine the most appropriate actions while adjusting to meet the unique needs and circumstances of the local community.

Should you consider opening?

- ✓ Will reopening be consistent with applicable state and local orders?
- ✓ Are you ready to protect employees at [higher risk](#) for severe illness?

ANY
NO



ALL
YES



Are recommended health and safety actions in place?

- ✓ Promote [healthy hygiene practices](#) such as [hand washing](#) and [employees wearing a cloth face covering](#), as feasible
- ✓ Intensify [cleaning, disinfection](#), and ventilation
- ✓ Encourage [social distancing](#) and enhance spacing between employees, including through physical barriers, changing layout of workspaces, encouraging telework, closing or limiting access to communal spaces, staggering shifts and breaks, and limiting large events, when and where feasible
- ✓ Consider modifying travel and commuting practices. Promote telework for employees who do not live in the local area, if feasible.
- ✓ Train all employees on health and safety protocols

ANY
NO



ALL
YES



Is ongoing monitoring in place?

- ✓ Develop and implement procedures to check for [signs and symptoms](#) of employees daily upon arrival, as feasible
- ✓ Encourage anyone who is sick to [stay home](#)
- ✓ Plan for if an employee gets sick
- ✓ Regularly communicate and monitor developments with local authorities and employees
- ✓ Monitor employee absences and have flexible leave policies and practices
- ✓ Be ready to consult with the local health authorities if there are cases in the facility or an increase in cases in the local area

ANY
NO



ALL
YES

